



Welcome to the World of Eutectic

The **Framec-branded** product line is renowned for the reliability of the refrigeration solutions it offers, and for its ever-expanding product range from OEM products to large trucks.



For over 50 years the Framtec brand has been a point of reference in the world of eutectic cold chain distribution.

Thanks to long-standing expertise, Framtec has proven itself over a long period of technological challenges. Today's new goals can only be tackled by breathing new life into tradition.

Because tradition can only be a strength for those who continue to look forward.



STRUCTURAL STABILITY AND IMPACT RESISTANCE

Framec refrigerated bodies are insulated with high-pressure injected polyurethane foam.

The **Framec Foaming Process** consists of the most advanced injection techniques, that allow for an even foaming that eliminates thermal bridges, thus guaranteeing the bodycell the best possible properties.



OVER 50 YEARS OF EXPERIENCE ON THE MARKET

Everything started in 1945 when the refrigeration industry was born and flourished in our area, elevating Casale Monferrato to the status of "Capital of Refrigeration".

Among the various brands that are present in our region, only **Framec** can boast the direct heritage of that lineage.

Founded in 1963, the Framec brand has progressed with the same spirit of innovation that animated the first steps in this field.



ENVIRONMENTALLY FRIENDLY (RESIN-FREE)

Framec production process is characterised by undivided attention towards sustainability. Our low environmental impact is the result of:



Optimisation of polyurethane employment



Minimal or no use of resin



Paintless gelcoat finish

Λ | FRANGER

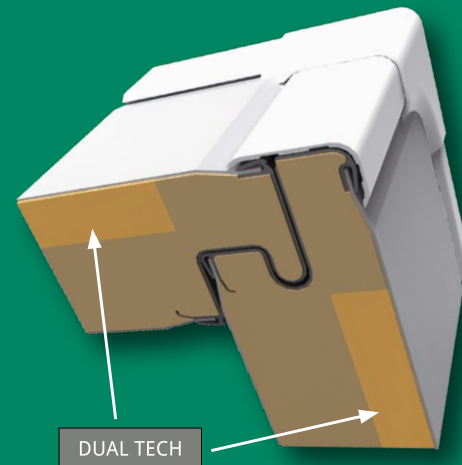


DT Technology

Framec refrigerated bodies are equipped with cutting-edge **DT (DualTech) panels**, which improve the bodycells' thermodynamic performances while providing them with outstanding structural stability and higher impact resistance.

The panels are developed through an innovative production process that combines a stabilised polyurethane layer with high pressure injection, providing the panels with greater strength and better insulation.

DT panels are the outcome of years of unceasing research and field experience, development and completed testing, thus able to guarantee maximum reliability and efficiency.



Framec refrigerated bodies are suitable for all truck brands and models; they can be mono- or multi-temperature, and are specifically designed to maintain food at the ideal temperature throughout the journey.

With a presence in more than 70 countries around the world, today Framec is one of the global leaders in the design, manufacturing and supply of refrigerated bodies.

FRAMEC

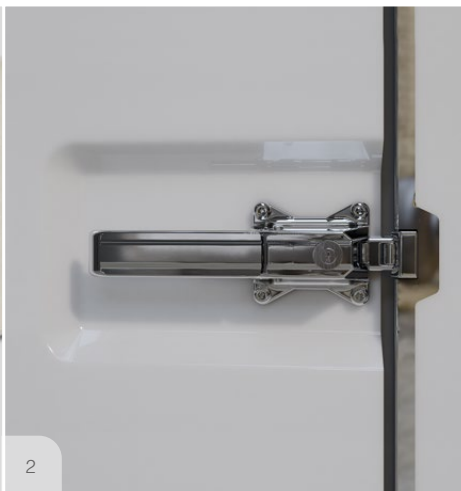


Technical Features

1. **High impact resistance** thanks to our **Dual Tech technology**, specifically designed to achieve greater durability, reliability and efficiency
2. State-of-the-art **ergonomic handle**, equipped with security lock
3. **Aluminium protection** profiles to ensure higher impact-resistance
4. Side doors available in different sizes, fitted with **anti-frost heaters** and special gaskets
5. **High-density polyurethane door stops**, fully covered in stainless steel
6. **140-Mm thickness** on roof and floor panels to ensure better insulation.



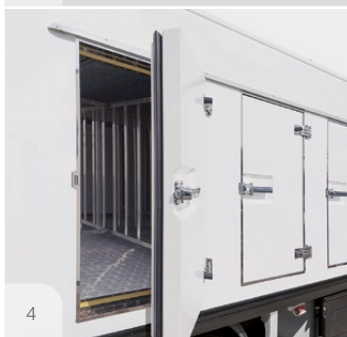
1



2



3



4



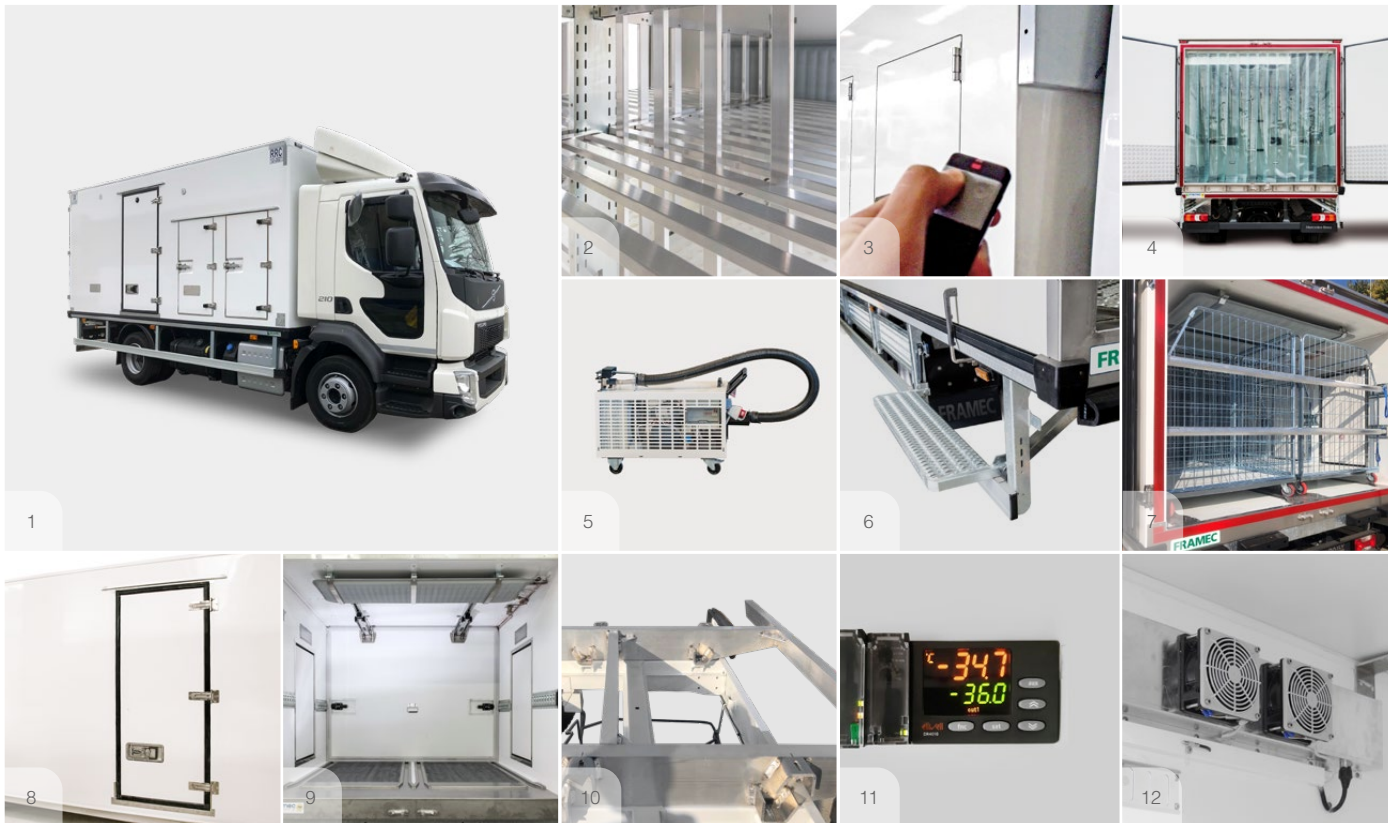
5



6

Range of Optional Extras

1. Hp Plus: enhanced thickness of 140mm on front and rear panels
2. Adjustable shelves
3. Central locking system: manual or electrical with remote control
4. Rear back doors
5. Remote refrigeration unit
6. Tilting side-steps
7. Roll containers system
8. Side door
9. Sliding inner wall
10. Aluminium frame
11. Smart interconnection system for control operation and GPS traceability
12. Multitemperature bodycells to simultaneously transport fresh and frozen produce.





FRAMEC Delivery Vans All Over The World



Franger Srl
Via XI Febbraio, 7
15032 Borgo San Martino (AL) - Italy

T +39 0142 429611
E info@franger.it
franger.it

FRAMEC
www.framectruck.com